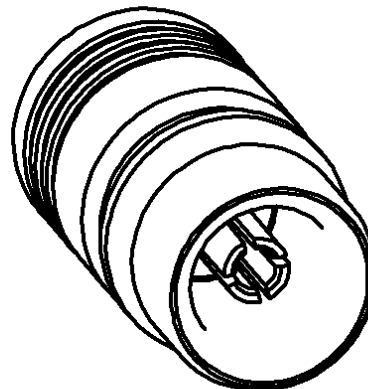
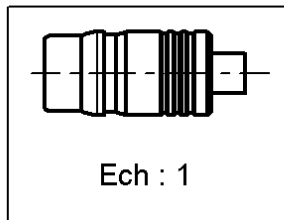
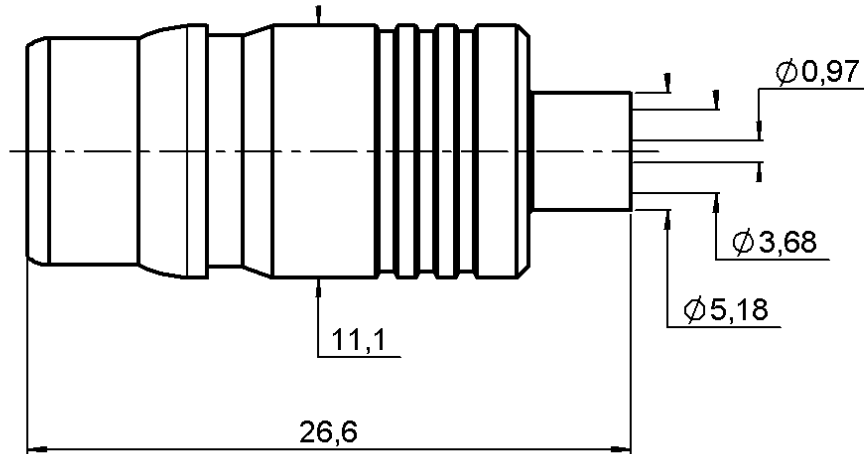


STRAIGHT JACK SOLDER TYPE

R164.336.000

CABLE .141

Series : QN



All dimensions are in mm.

COMPONENTS	MATERIALS	PLATINGS (µm)
BODY	BRASS	BBR 0.5 OVER SILVER 3
CENTER CONTACT	BERYLLIUM COPPER	GOLD 1.3 OVER COPPER 2.5
OUTER CONTACT		
INSULATOR	PTFE	
GASKET		
OTHERS PARTS	BRASS	GOLD 1 OVER COPPER 2
-	-	-
-	-	-

Issue : 0350 B

In the effort to improve our products, we reserve the right to make changes judged to be necessary.



STRAIGHT JACK SOLDER TYPE

R164.336.000

CABLE .141

Series : QN

PACKAGING

Standard	Unit	Other
50	'W' option	Contact us

SPECIFICATION

ELECTRICAL CHARACTERISTICS

Impedance		50	Ω
Frequency		* 0-6	GHz
VSWR	1.05 +	0.025	x F(GHz) Maxi
Insertion loss		0.048	\sqrt{F} (GHz) dB Maxi
RF leakage	- (**90	- F(GHz)) dB Maxi
Voltage rating		350	Veff Maxi
Dielectric withstanding voltage		1000	Veff mini
Insulation resistance		5000	M Ω mini

CABLE ASSEMBLY

Stripping	a	b	c	d	e	f
mm	3.17	0.00	0.00	0.00	0.00	0.00

Assembly instruction : **NA**

Recommended cable(s)
 RG 402
 KS 2
 HC80000-3
 BELN YQ43858

Cable retention
 - pull off **270** N mini
 - torque **NA** N.cm

MECHANICAL CHARACTERISTICS

Center contact retention			
Axial force – Mating end		27	N mini
Axial force – Opposite end		27	N mini
Torque		NA	N.cm mini

TOOLING

Part Number	Description	Hexagon
.	.	.
R282.053.000	STRIPPING TOOL	
R282.067.000	POINTER GAUGE	

Recommended torque			
Mating			N.cm
Panel nut			N.cm
Clamp nut			N.cm
A/F clamp nut		0.000	mm

Mating life		100	Cycles mini
Weight		11.910	g

OTHERS CHARACTERISTICS

* Usable 0-11GHz
 **RF Leakage : -80dB min 3<F<6GHz
 ***PIM3 : -112dBm (2 x20W at 1.8GHz)

ENVIRONMENTAL

Operating temperature		-55/+125	$^{\circ}$ C
Hermetic seal			Atm.cm3/s
Panel leakage			

Issue : 0350 B

In the effort to improve our products, we reserve the right to make changes judged to be necessary.



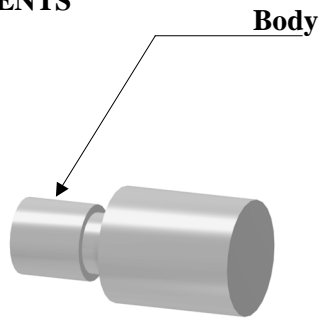
STRAIGHT JACK SOLDER TYPE

R164.336.000

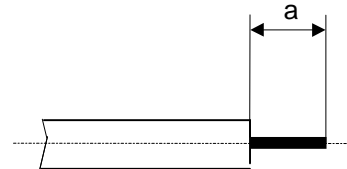
CABLE .141

Series : QN

COMPONENTS



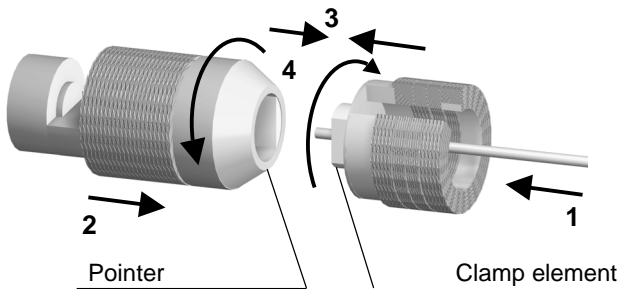
STRIPPING DIMENSIONS



We recommend a thermal preconditioning of the cable

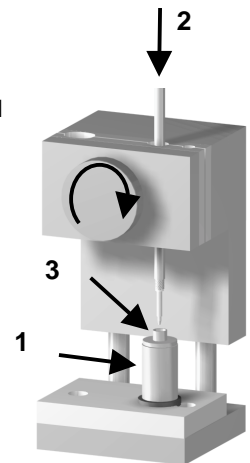
1

Insert the cable into the clamp element.
Present the pointer in front of the clamp element.
Push the cable until it stops, while holding the clamp element pushed on the hollow part of the pointer.
Turn the clamp element until the release of the pointer.



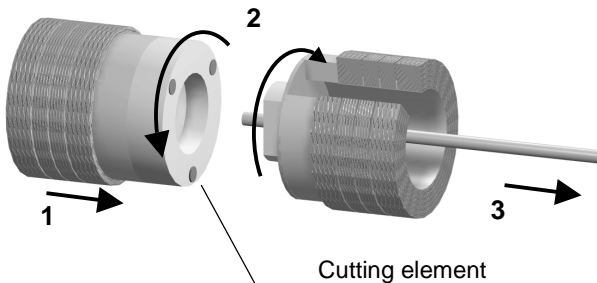
3

Position the connector onto the Assembly jig.
Slide the cable into the connector until it bottoms against the body tighten.
Put three rings of solder around the cable and solder.
After cooling, remove the assembly from the jig.



2

Present the cutting element in front of the clamp element.
Push and turn both elements, back part opposite to the front part. Once they reach the stop, pull without revolving.



Issue : 0350 B

In the effort to improve our products, we reserve the right to make changes judged to be necessary.

